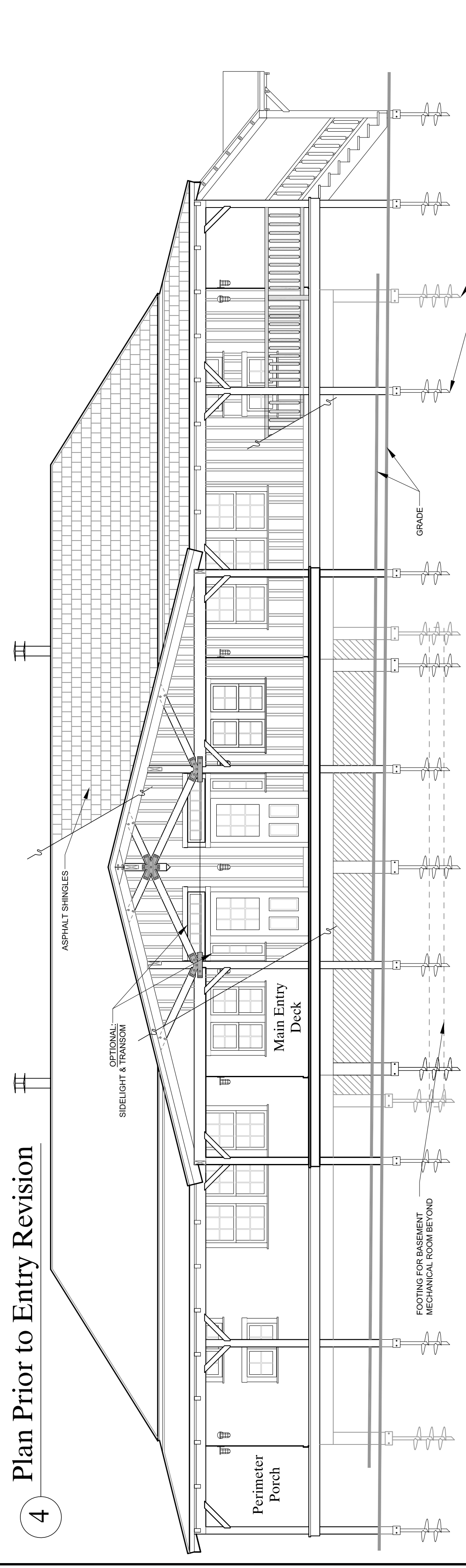
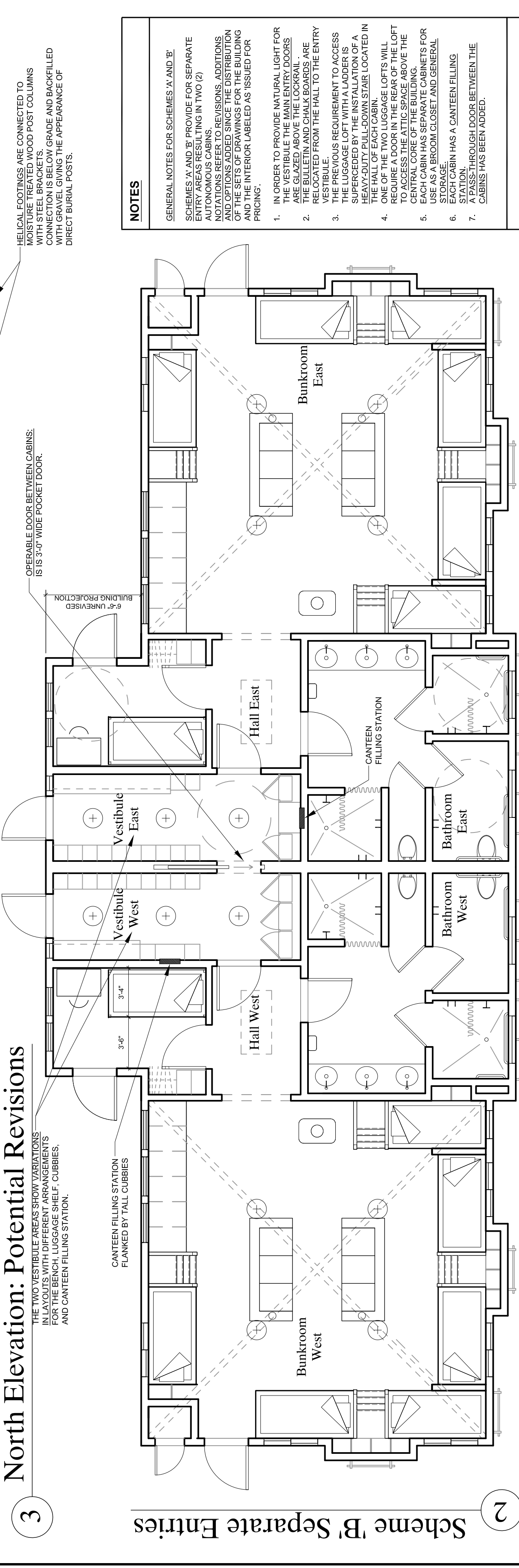


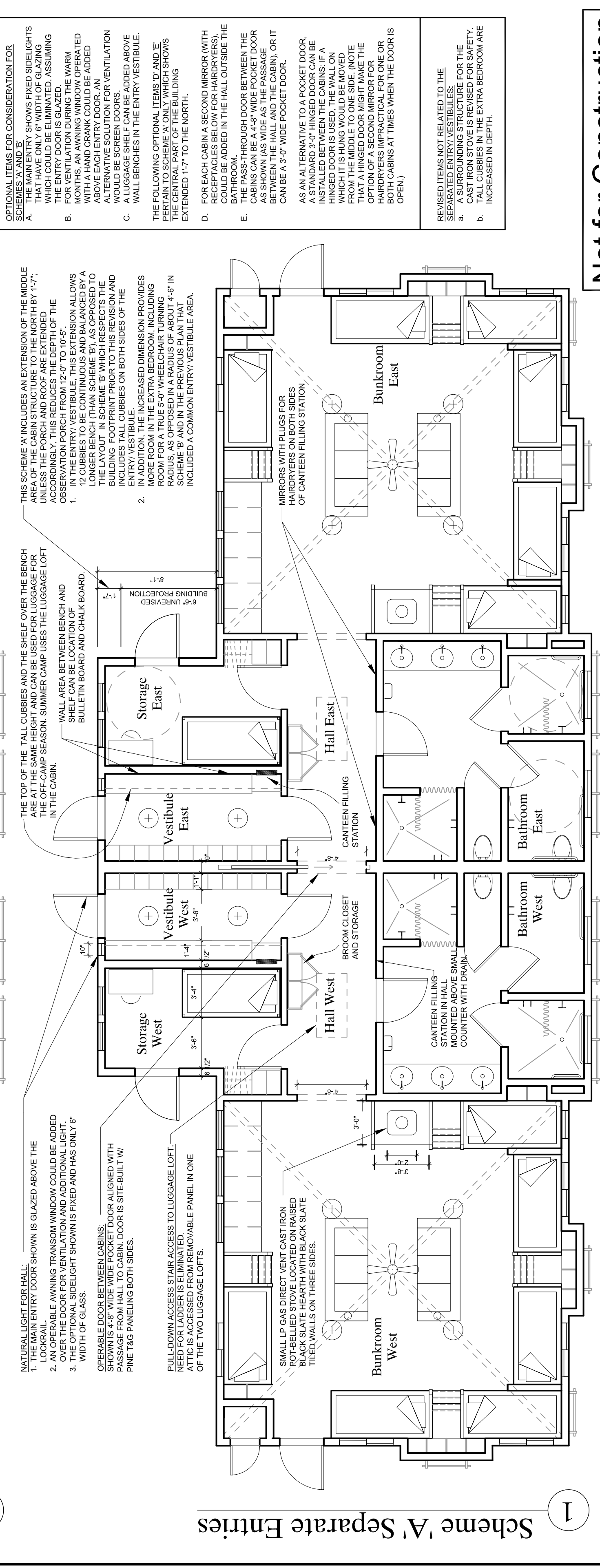
4 Plan Prior to Entry Revision



3 North Elevation: Potential Revisions



2 Scheme 'B' Separate Entries



1 Scheme 'A' Separate Entries

**NOTES**

GENERAL NOTES FOR SCHEMES 'A' AND 'B':

SCHEMES 'A' AND 'B' PROVIDE FOR SEPARATE CABIN ENTRIES IN TWO (2) AUTONOMOUS CABINS. NOTATIONS REFER TO REVISIONS, ADDITIONS, DELETIONS, AND DIMENSIONS OF THE SETS OF DRAWINGS FOR THE BUILDING AND THE INTERIOR LABELED AS 'ISSUED FOR PRICING'.

- IN ORDER TO PROVIDE NATURAL LIGHT FOR THE VESTIBULE THE MAIN ENTRY DOORS WILL BE RELOCATED TO THE PERIPHERY OF THE BUILDING AND CHALK BOARDS ARE TO BE RELOCATED FROM THE HALL TO THE ENTRY.
- THE BULLETIN BOARD REQUIREMENT TO ACCESS THE LUGGAGE LOFT WITH A LADDER IS SUPERSEDED BY THE INSTALLATION OF A LUGGAGE LOFT WITH STAIRS LOCATED IN THE HALL OF EACH CABIN.
- ONE OF THE TWO LUGGAGE LOFTS WILL REQUIRE A DOOR IN THE AREA OF THE LOFT CENTRAL CORE OF THE BUILDING.
- EACH CABIN HAS SEPARATE CABINETS FOR STORAGE, BROOM CLOSET AND GENERAL STORAGE.
- EACH CABIN HAS A CANTENEN FILING STATION THROUGH DOOR BETWEEN THE CABINS HAS BEEN ADDED.

OPTIONAL ITEMS FOR CONSIDERATION FOR SCHEMES 'A' AND 'B':

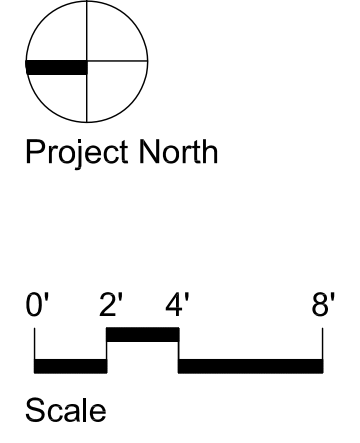
- THE MAIN ENTRY SHOWS FIXED SIDELIGHTS WHICH COULD BE ELIMATED, ASSUMING FOR VENTILATION DURING THE WINTER WITH A HAND CRANK COULD BE ADDED ABOVE EACH ENTRY DOOR. AN OPERABLE DOOR COULD BE ADDED ABOVE EACH ENTRY DOOR. VENTILATION WALL BENCHES IN THE ENTRY VESTIBULE.
- THE FOLLOWING OPTIONAL ITEMS 'D' AND 'E' PERTAIN TO SCHEME 'A' ONLY WHICH SHOWS EXTENDED 1'-7" TO THE NORTH.
- FOR EACH CABIN, SECOND MIRRORS WITH RECESSED CABINETS FOR MIRRORS COULD BE ADDED IN THE HALL OUTSIDE THE BATHROOM.
- FOR EACH CABIN, SECOND MIRRORS WITH RECESSED CABINETS FOR MIRRORS COULD BE ADDED IN THE HALL OUTSIDE THE BATHROOM.
- AS SHOWN (AS WIDE AS THE PASSAGE BETWEEN THE HALL AND THE CABIN, OR IT CAN BE 3'-0" WIDE POCKET DOOR.
- AS AN ALTERNATIVE TO A POCKET DOOR, A HINGED DOOR IS USED, THE WALL ON EITHER SIDE OF THE DOOR IS HINGED FROM THE HALL TO THE INSIDE OF THE CABIN. A HINGED DOOR MIGHT MAKE THE OPTION OF A SECOND MIRROR FOR EACH CABIN MORE FEASIBLE AT TIMES WHEN THE DOOR IS OPEN.)

REVISED ITEMS NOT RELATED TO THE SCHEMES 'A' AND 'B' ARE:

- TALL CUBBIES IN THE EXTRA BEDROOM ARE INCREASED IN HEIGHT.

Not for Construction

Date:	Issued:
01/17/16	Schematic Revision Options



YMCA Camp Jewell  
6 Prock Hill Road  
Colebrook, Connecticut

Architect  
Frank Rawlinson  
84 Monroe Street  
Bridgeport, CT 06605  
t 815.919.5657  
f.rawlinson@yahoo.com

Cabin #3  
Schematic Options for  
Separate Cabin Entrances

Project Start Date: 05.15.10

Drawing No. A-1

Not for Construction